

RESOURCES

All resources listed here are not-for-profit agencies. Contact the agency for information on fees for services – many are available free. For resources not found here, please contact Living Independently in L.A. (LILA), Westside Center for Independent Living (WCIL) or InfoLine, listed below for additional information and referrals.

Resources, Referrals and Advocacy

Disability Rights California: Advocacy for people with disabilities. (800) 776-5746 TTY (800) 718-5798 www.pai-ca.org

InfoLine: Health and human services resources & referrals. (310) 551-2929/TTY (800) 660-4026 www.infoline-la.org

LILA- Living Independently in L.A.: Resources for accessible businesses and services, and agencies serving persons with disabilities in the LA area. <http://lila.ucla.edu>

WCIL- Westside Center for Independent Living: Advocacy, direct services and referrals for persons with any disability, of any age. (310) 390-3611 www.wcil.org

Western Law Center for Disability Rights: Education, advocacy, legal representation for disability rights issues. (213) 736-1031/TTY (213) 736-8310 www.wlcdr.org

Deaf and Hard of Hearing Services

Greater LA Council on Deafness (GLAD): Interpreters, classes, resources. (323) 478-8000 (V/TTY) www.gladinc.org

Self Help for the Hard of Hearing (SHHH): Information, resources and referrals. www.hearingloss.org

St. John's Deaf /Hard of Hearing Program: Mental health services, ASL fluent staff. (310) 829-8536/TTY 829-8528

Calif. Telephone Access Pgm: Free phones, TTYs, volume controls, other tel. accessories. (800) 806-1191/TTY (800) 806-4474

Homeless Services

SaMoShel: Accessible emergency shelter. (310) 451-1358 www.salvationarmy-socal.org

OPCC: Emergency shelter for homeless mentally ill or battered women; also homeless support services. (310) 264-6646 www.opcc.net

Developmental Disabilities

Westside Regional Center: Services for children & adults with developmental disabilities. (310) 258-4000 www.westsiderc.org

Area Board 10: Protects and advocates for service rights for people with developmental disabilities. (818) 543-4631 www.areaboard10.org

Education

SMMUSD Office of Special Education: Services for SMMUSD students in Special Education. (310) 450-8338

SM College Office of Disabled Student Services: Support services for SMC students with disabilities. (310) 434-4265

SMC/Emeritus College: Classes for seniors and seniors with a disability. (310) 434-4306 www.smc.edu/emeritus/default.htm

Groceries and Meals

Meals on Wheels West: Meals delivered to home-bound seniors and disabled. (310) 394-5133 www.mealsonwheelswest.org

Food Pantries: Groceries for low income individuals and families.
St. Anne's 2031 Colorado St. SM 90401 (310) 829-4040
Salvation Army 1533 4th St. SM 90401 (310) 451-1358
For other locations, call InfoLine (above). (310) 551-2929

Health Care

Venice Family Clinic: Free and low-cost primary health care. (310) 392-8636 www.venicefamilyclinic.org

Women's Health Center: Sliding scale fee medical services for women. Accessible exam rooms/tables. (310) 203-8899

HIV/AIDS Services

Common Ground: Direct services for persons living with HIV/AIDS. (310) 314-5480 www.commongroundwestside.org

Project Angel Food: Meals delivered to persons homebound/disabled by AIDS and other illnesses in LA Co. (323) 845-1810 www.angelfood.org

Seniors with a Disability

WISE & Health Aging: Case management, advocacy, resources and referrals for seniors. (310) 394-9871 www.wiseandhealthyaging.org

Assistive Technology

EmpowerTech: Computer-based assistive technology, evaluations, training. (310) 338-1597 www.empowertech.org

Mental Health Services

Step Up on Second: Vocational & housing support services, case mgt. (310) 394-6889 www.stepuponsecond.org

Edelman Mental Health Center. (LA Co. Dept. of Mental Health): Comprehensive services. (310) 966-6500

Didi Hirsch Community Mental Health Center: Comprehensive services. (310) 390-6612 www.didihirsch.org

St. John's Child/Family Development Center: Mental health services for children/adolescents & their families. ASL-fluent staff. (310) 829-8921 www.stjohns.org

Recreation

Westside Special Olympics: Sports programs for people with developmental disabilities. (310) 458-8300

SM Community Programs: Classes and events. People with disabilities welcome and encouraged to participate. (310) 458-8300 TTY (310) 576-4754 www.smgov.net/comm_progs

UnRecables: Outdoor sports for people with physical disabilities. www.unrecables.com

Transportation

Santa Monica Dial-A-Ride: Curb-to-curb service for seniors & persons with disabilities within Santa Monica. (310) 396-9874 www.wiseseniorservices.org

Big Blue Bus: City of Santa Monica transit system. (310) 451-5444/TTY (310) 395-6024 www.bigbluebus.com

Access Services Inc. (ASI): Curb-to-curb service for qualified persons with a disability in L.A. County. (800) 827-0829/ TTY(800) 827-1359 www.asila.org

Vision Services

Center for the Partially Sighted: Services for those with low or partial vision. (310) 458-3501 www.low-vision.org

Braille Institute: Services, referrals. (323) 663-1111 www.brailleinstitute.org/center-la.html

Housing

Community Corp. of SM: Develops/manages housing for low-income tenants. (310)394-3487 www.communitycorp.org

WCIL Home Access Program: Home accessibility modifications for low income SM residents with disabilities. (310) 390-3611 www.wcil.org

SANTA MONICA DISABILITIES COMMISSION

The purpose of the Disabilities Commission is to ensure that people with disabilities have access to all City programs, services and activities, and are able to fully participate in all aspects of community life. The Commission addresses a variety of disability related issues that affect our quality of life in Santa Monica. These include: transportation, housing, physical access, access to services, sensitivity of City staff and community education and awareness.

The Commission is an advisory body to the Santa Monica City Council and City staff and does not provide direct services to individuals.

COMMISSION MEETINGS

The public is welcome at Commission meetings, and is encouraged to provide public input on relevant disability issues at meetings, by email and postal mail. The Commission meets on the first Monday of every month from 6:30 to 9:00 pm at the Ken Edwards Center, 1527 Fourth St., Santa Monica. Please contact the Human Services Division (information below) to verify the meeting date, or check the agenda for each meeting on the website at : www.smgov.net/ccs/agendas/disab/ or by calling (310) 458-8701 or TTY (310) 458-3696.

The Ken Edwards Center is wheelchair accessible. For further information, and/or to request a disability-related accommodation please call the Human Services Division at (310) 458-8701, TTY (310) 458-8696, at least 5 business days prior to the meeting. Please address email to: HumanServices.mailbox@smgov.net

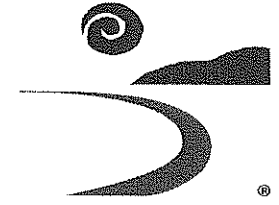
This document is available in alternate formats upon request.



The City of Santa Monica Welcomes
People of All Abilities

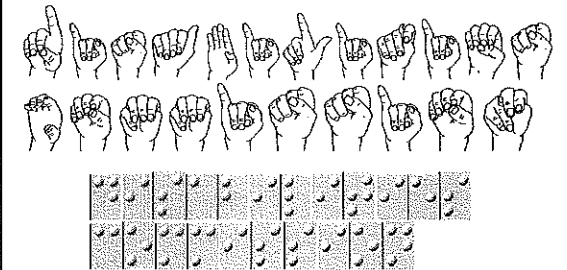


City of Santa Monica
Disabilities Commission
1685 Main St., Rm. 212
Santa Monica CA 90401



Santa Monica Disabilities Commission

*Resources for People with
Disabilities in Santa Monica*



Community & Cultural Services Dept.
Human Services Division
1685 Main St., Rm. 212
Santa Monica CA 90401
Voice (310) 458-8701
TTY (310) 458-8696
Fax (310) 458-3380
humanservices.mailbox@smgov.net
www.smgov.net/ccs/hsd

